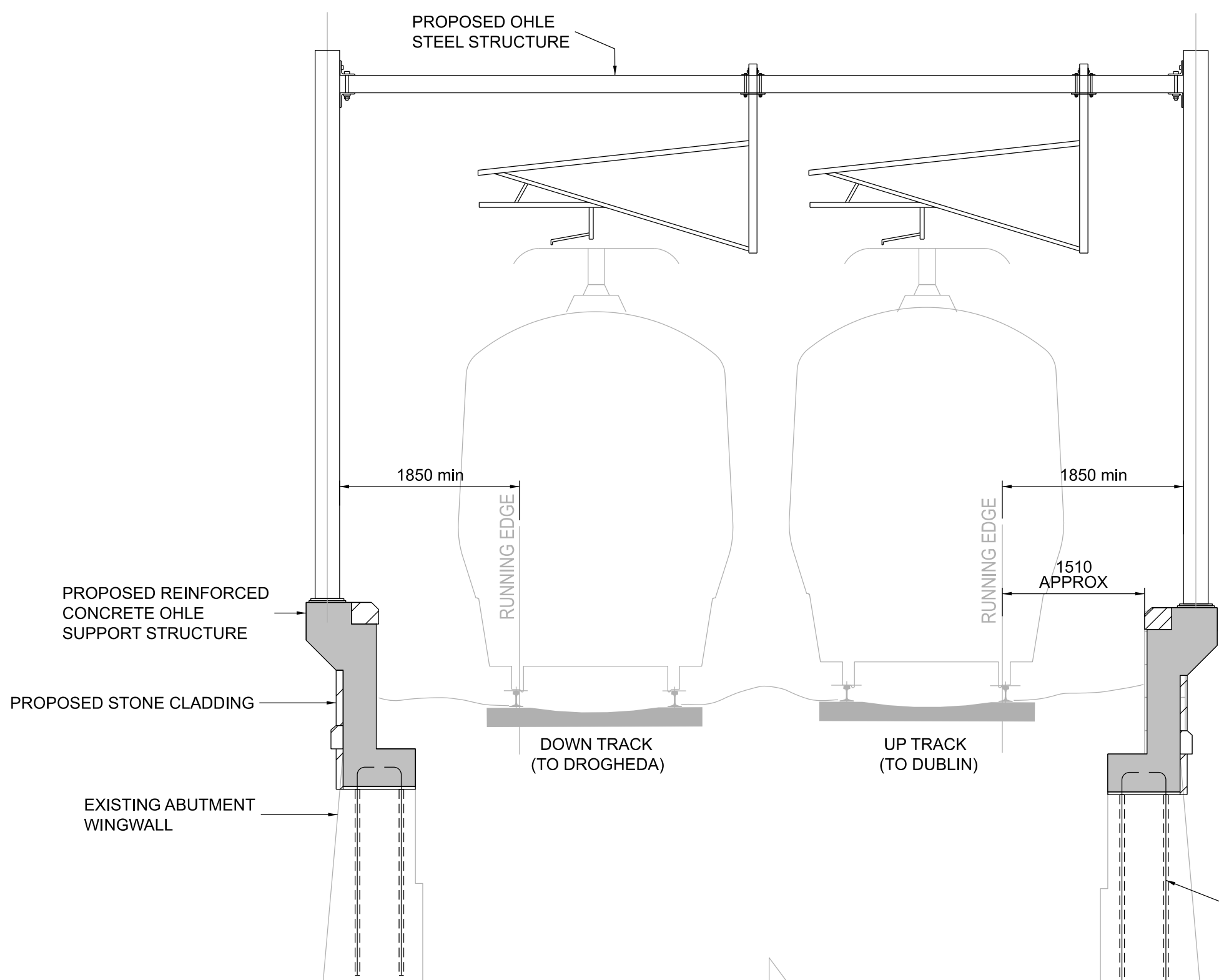
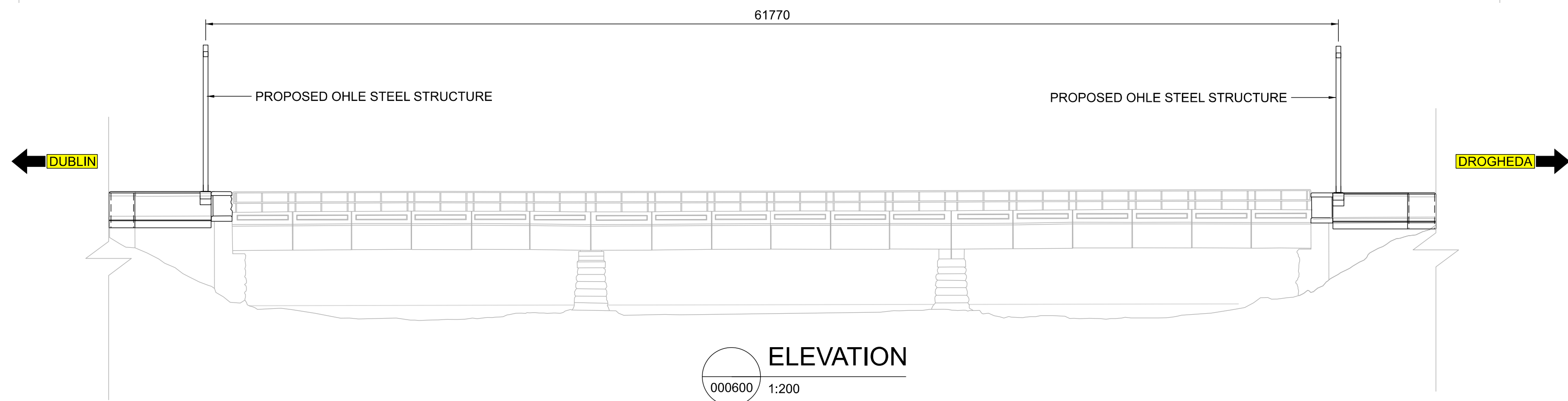
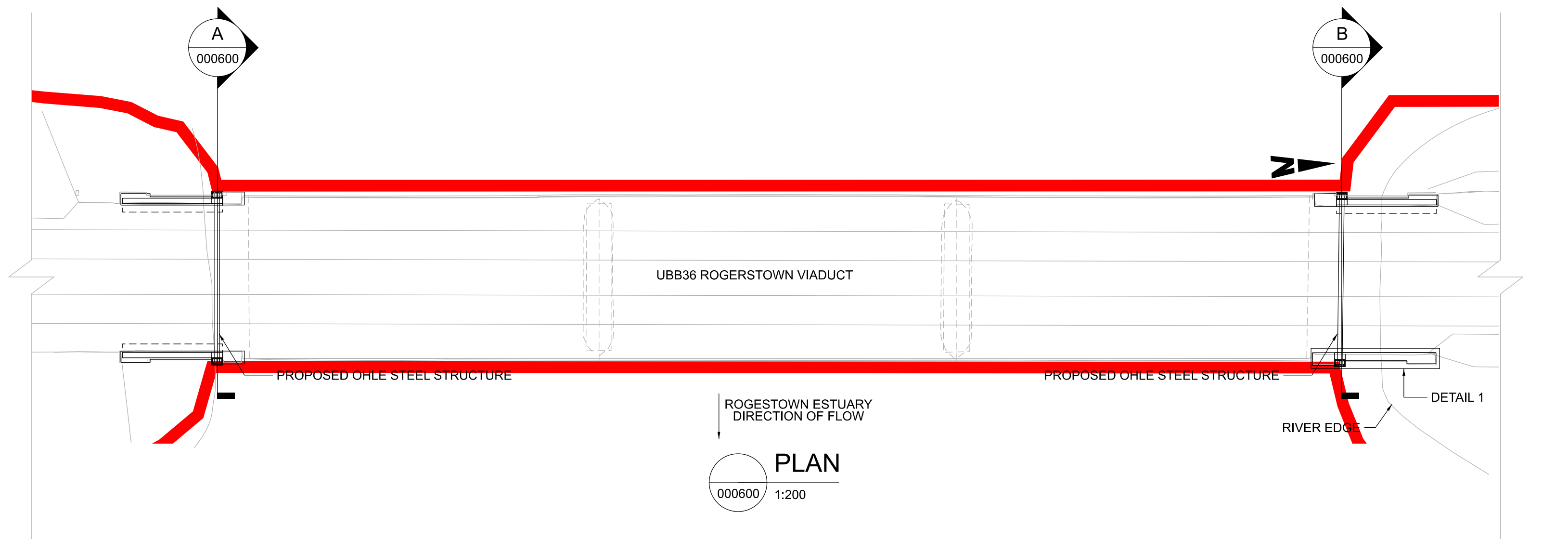


.....

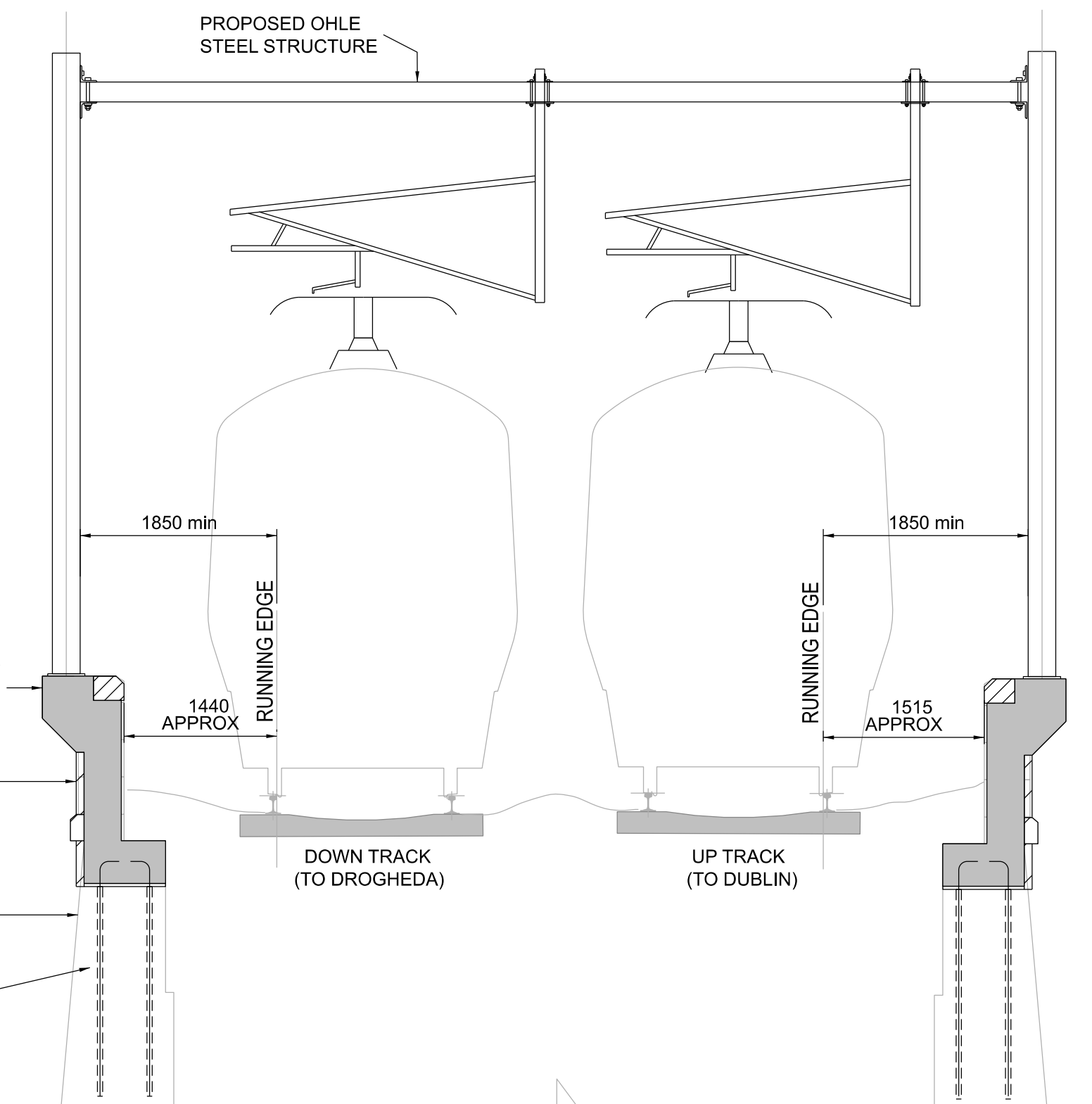
SPECIFIC LOCATIONS

06 Rogerstown Estuary

.....



CONNECTION BETWEEN
EXISTING ABUTMENT AND
NEW REINFORCED
CONCRETE OHLE
SUPPORT STRUCTURE

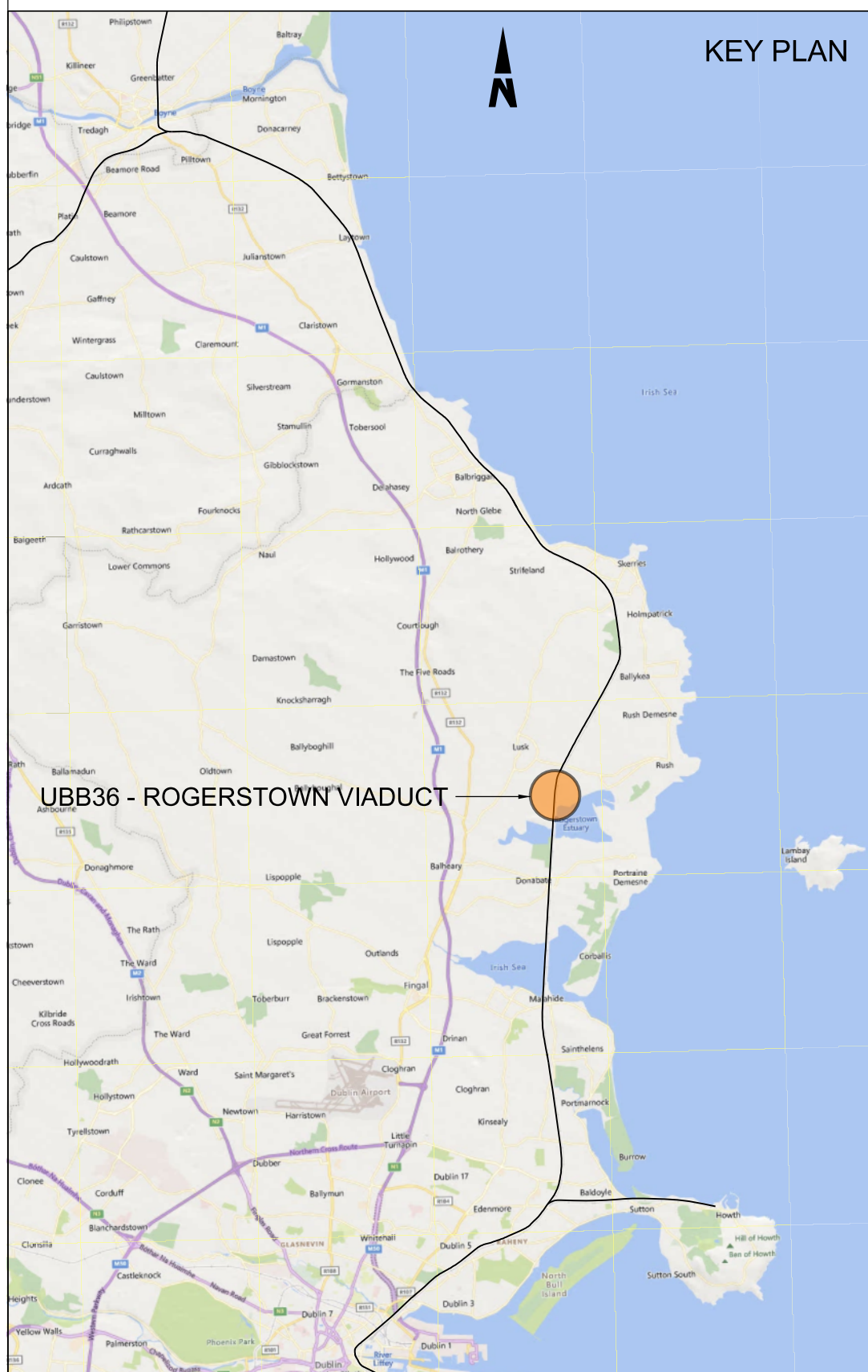


NOTES

1. ALL DIMENSIONS ARE SHOWN IN MILLIMETERS UNLESS NOTED OTHERWISE.
2. ALL LEVELS ARE SHOWN IN METERS ABOVE ORDINANCE DATUM.
3. DO NOT SCALE FROM THIS DRAWING.
4. ALL STEELWORK SHALL BE GRADE S355 UNLESS NOTED OTHERWISE.
STEELWORK SHALL CONFORM TO THE FOLLOWING STANDARDS:
UB & UC SECTIONS - BS EN 10025
PFC & PLATES - BS EN 10025
RHS, SHS & CHS - BS EN 10210
EQUAL & UNEQUAL ANGLES - BS EN 10056
FLAT SQUARE & ROUND BAR - BS EN 10025
5. OHLE STEEL STRUCTURES SHOWN INDICATIVELY. EXACT MEMBERS TYPES, HEIGHTS AND LENGTHS TO BE DETERMINED AT DETAILED DESIGN.

LEGEND

- DEVELOPMENT BOUNDARY
- PROPOSED ELEMENTS
- EXISTING ELEMENTS



Disclaimer
© Irish Rail (2023). This drawing is confidential and the copyright in it is owned by Irish Rail. This drawing must not be either loaned, copied or otherwise reproduced in whole or in part or used for any purpose without the prior permission of Irish Rail.
© OpenStreetMap contributors
© Ordnance Survey Ireland and Government of Ireland. All O.S. data used for plans are printed under Copyright Ordnance Survey Ireland 0039723 (OSI Aerial Data or OSI Lidar Data) & 2023/OSI_NMA_190 (OSI Vector Data). All elevations are in metres and relate to OSI Geoid Model (OSGM02) Mean Head as defined by existing Project Control. All Co-ordinates are in Irish Transverse Mercator Grid (ITM) as defined by OSI active GPS station Tallaght College (TLLG).



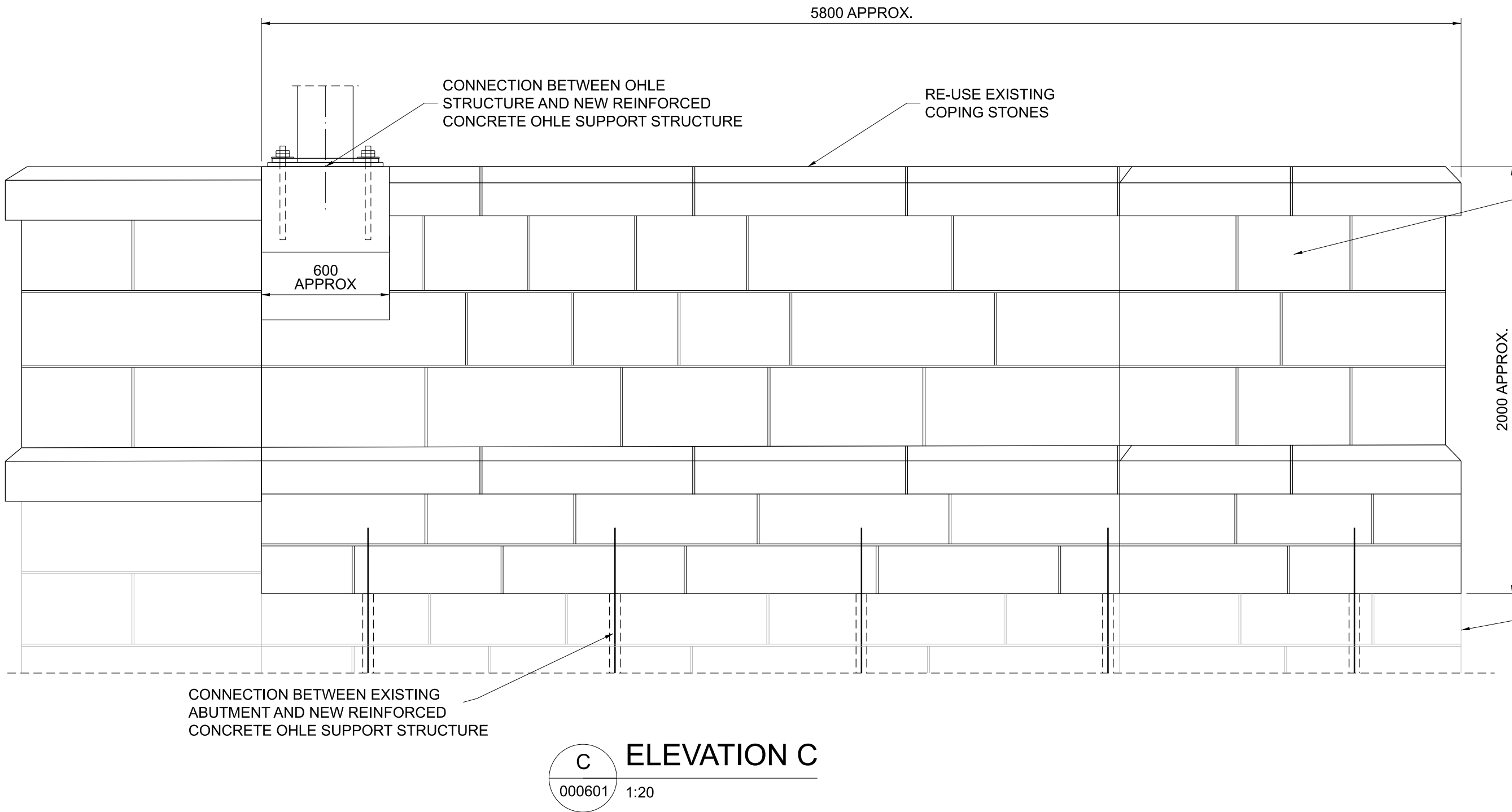
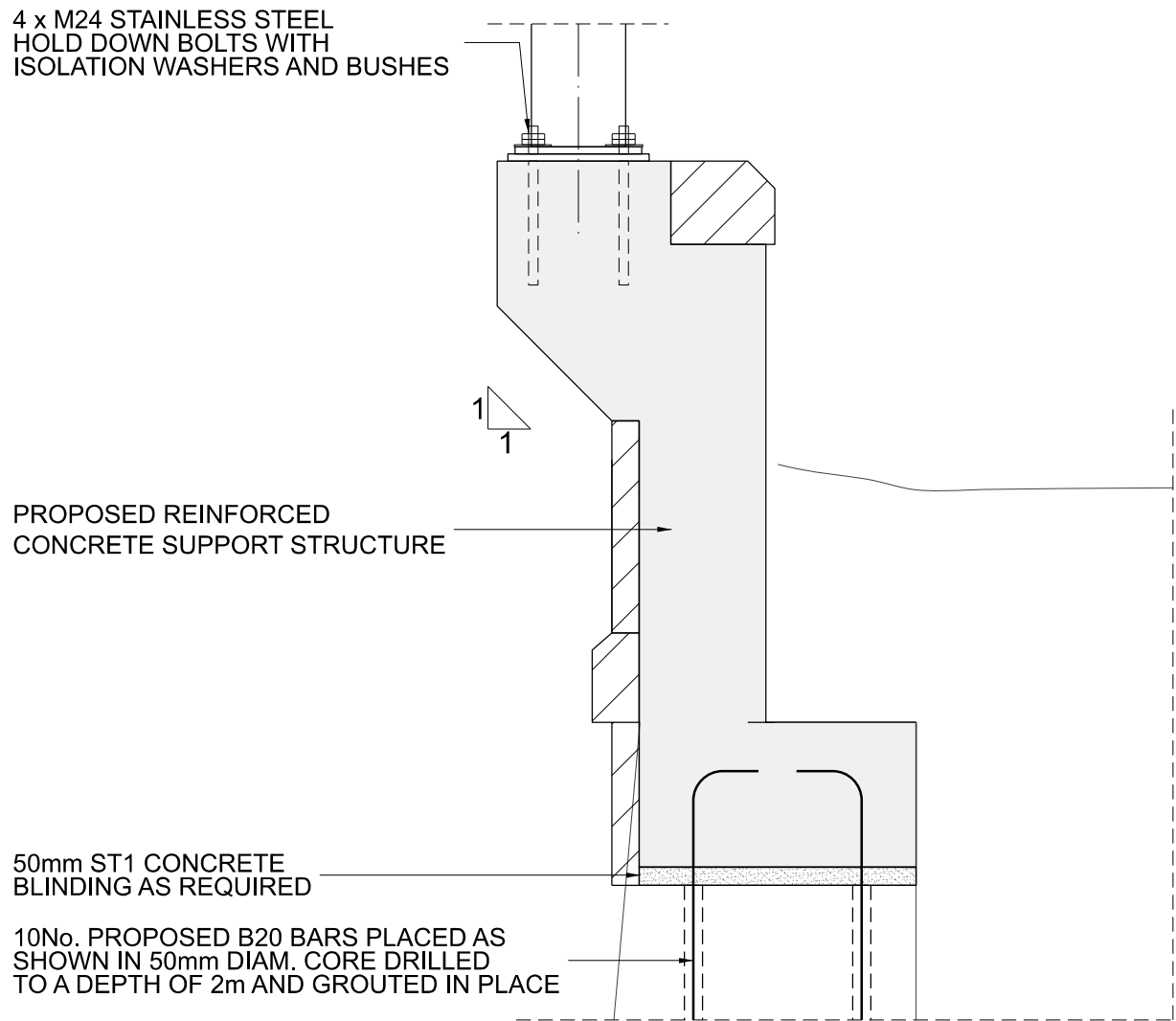
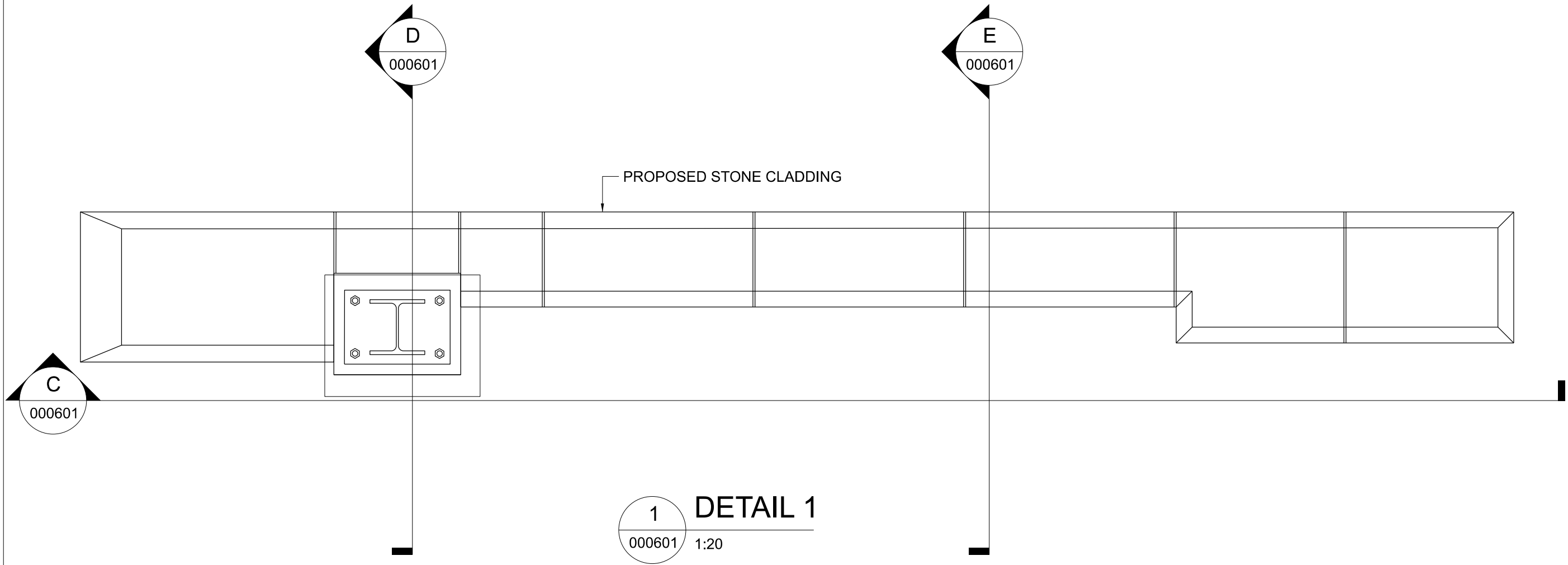
Rev	Date	Dm	Chk'd	App'd	Description
P01	13/10/2023	AB	CG	DB	PLANNING ISSUE



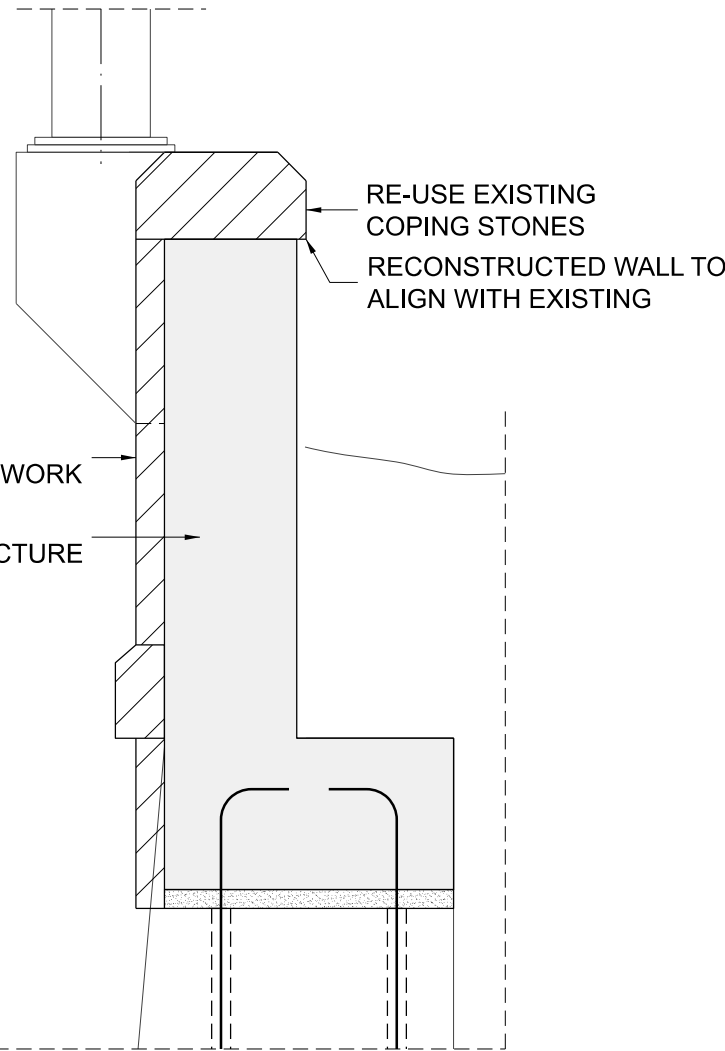
Date	01/06/2023	Scale	As Shown @ A1 @ A3	Drawn	AB	Checked	CG	Approved	DB
Project Code	D+WP56	Originator Code	ARP	QMS Code	280275-00				

Project Title	DART+ COASTAL NORTH			
Drawing Title	UBB36 - ROGERSTOWN VIADUCT OHLE SUPPORT GENERAL ARRANGEMENT			
Drawing File Name	D+WP56-ARP-P4-NL-DR-RO-000600	Sheet Number	01 of 02	Status S3
				Rev P01

DO NOT SCALE USE FIGURED DIMENSIONS ONLY

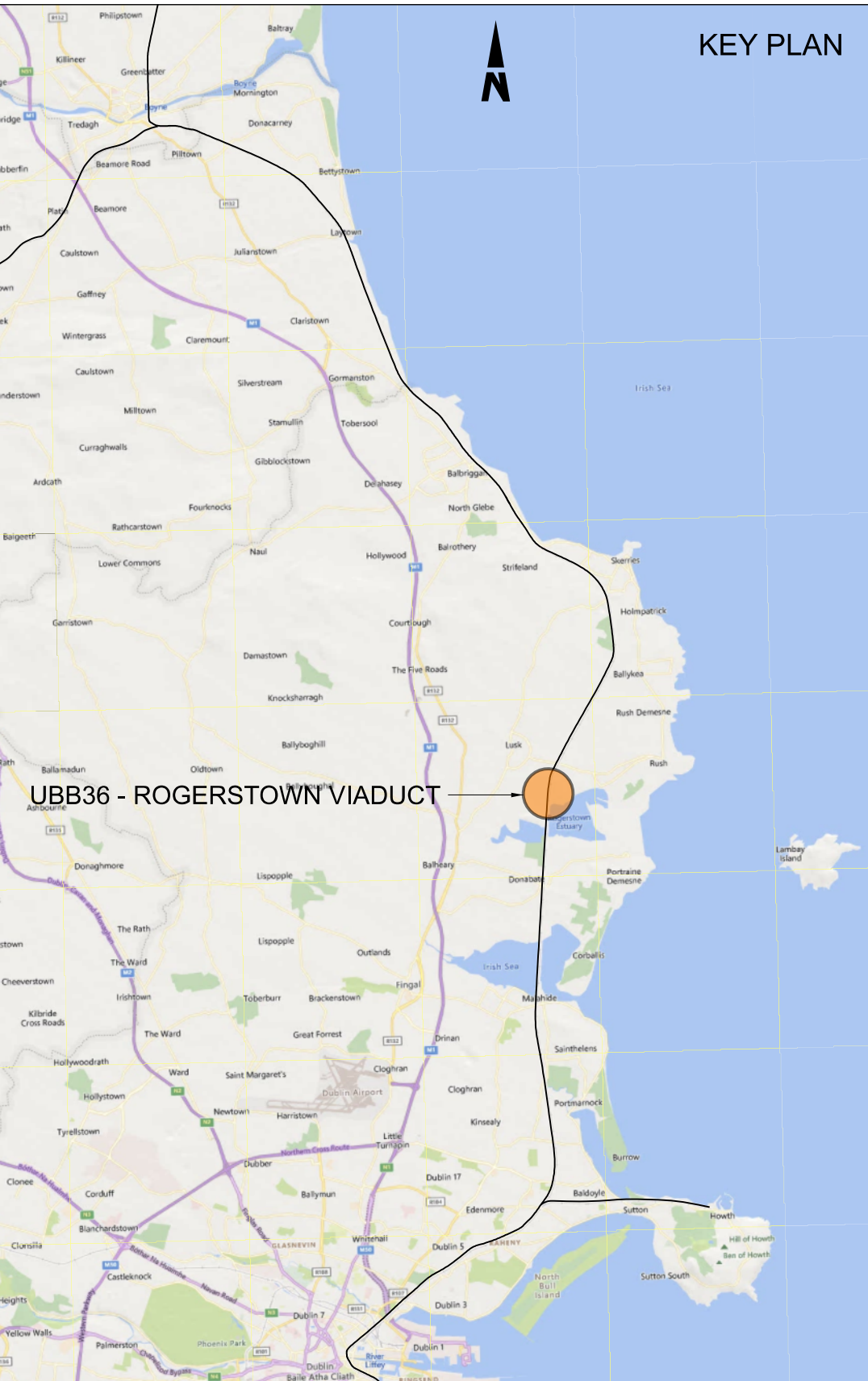


STONE MASONRY CLADDING THE EXISTING STONE MASONRY SHALL BE REMOVED WITH CARE FROM THE WINGWALLS, CLEANED, CUT AND RE-USED AS THE FACIA CLADDING. UNSUITABLE STONEWORK SHALL BE REPLACED WITH A SIMILAR STONE FROM THE SAME QUARY USED TO SOURCE THE ORIGINAL STONEWORK.



- NOTES**
1. ALL DIMENSIONS ARE SHOWN IN MILLIMETERS UNLESS NOTED OTHERWISE.
 2. ALL LEVELS ARE SHOWN IN METERS ABOVE ORDINANCE DATUM.
 3. DO NOT SCALE FROM THIS DRAWING.
 4. OHLE STEEL STRUCTURES SHOWN INDICATIVELY. EXACT MEMBERS TYPES, HEIGHTS AND LENGTHS TO BE DETERMINED AT DETAILED DESIGN.

- LEGEND**
- DEVELOPMENT BOUNDARY
 - PROPOSED ELEMENTS
 - EXISTING ELEMENTS



Disclaimer

© Irish Rail (2023). This drawing is confidential and the copyright in it is owned by Irish Rail. This drawing must not be either loaned, copied or otherwise reproduced in whole or in part or used for any purpose without the prior permission of Irish Rail.

© OpenStreetMap contributors

© Ordnance Survey Ireland and Government of Ireland. All O.S. data used for plans are printed under Copyright Ordnance Survey Ireland 0039723 (OSI Aerial Data or OSI Lidar Data) & 2023/OSI_NMA_180 (OSI Vector Data). All elevations are in metres and relate to OSI Geoid Model (OSGM02) Mean Head as defined by existing Project Control. All Co-ordinates are in Irish Transverse Mercator Grid (ITM) as defined by OSI active GPS station Tallaght College (TLLG).



Rev	Date	Dm	Chk'd	App'd	Description
P01	13/10/2023	AB	CG	DB	PLANNING ISSUE

Client		Engineering Designer	
Date	Scale	Drawn	Checked
01/06/2023	As Shown @ A1 @ A3	AB	CG
Project Code	Originator Code	QMS Code	Approved
D+WP56	ARP	280275-00	DB

Project Title			
DART+ COASTAL NORTH			
Drawing Title			
UBB36 - ROGERSTOWN VIADUCT OHLE SUPPORT ELEVATION AND DETAIL			
Drawing File Name	Sheet Number	Status	Rev
D+WP56-ARP-P4-NL-DR-RO-000601	02 of 02	S3	P01

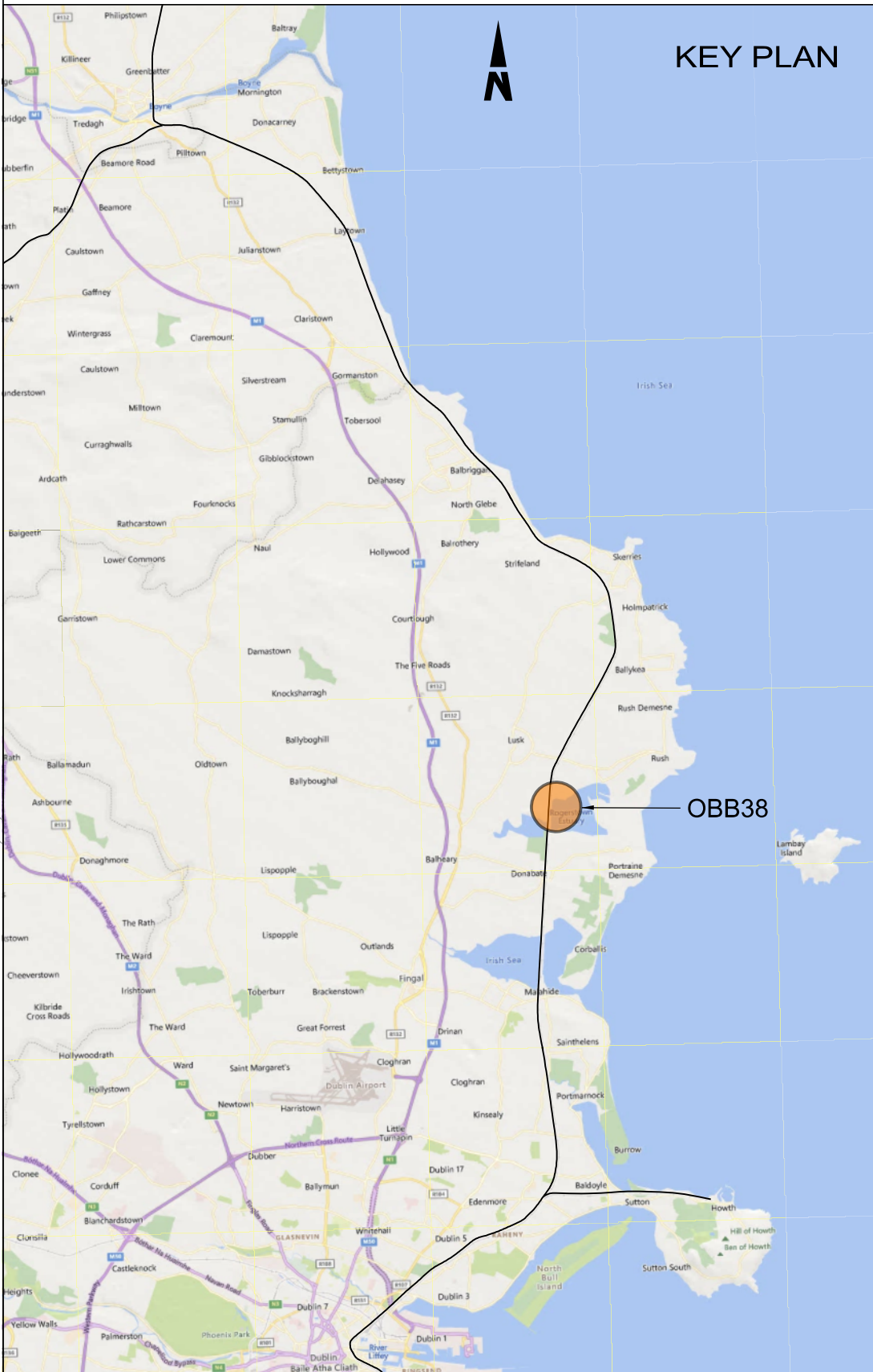
DO NOT SCALE USE FIGURED DIMENSIONS ONLY

**BRIDGE PARAPET
MODIFICATIONS**



- NOTES:
1. ALL DIMENSIONS ARE SHOWN IN MILLIMETERS UNLESS NOTED OTHERWISE.
 2. ALL LEVELS ARE SHOWN IN METERS ABOVE ORDNANCE DATUM.
 3. DO NOT SCALE FROM THIS DRAWING.
 4. PROPOSED AND EXISTING OVERHEAD LINE EQUIPMENT (OHLE) IS NOT SHOWN IN PLAN OR ELEVATION.

- LEGEND:
- EXISTING ELEMENTS
 - PROPOSED ELEMENTS
 - DEVELOPMENT BOUNDARY
 - EXISTING BRIDGE



Disclaimer

© Irish Rail (2023). This drawing is confidential and the copyright in it is owned by Irish Rail. This drawing must not be either loaned, copied or otherwise reproduced in whole or in part or used for any purpose without the prior permission of Irish Rail.

© OpenStreetMap contributors

© Ordnance Survey Ireland and Government of Ireland. All O.S. data used for plans are printed under Copyright Ordnance Survey Ireland 0039723 (OSI Aerial Data or OSI Lidar Data) & 2023(OSI_NMA_180 (OSI Vector Data)). All elevations are in metres and relate to OSI Geoid Model (OSGM02) Mean Head as defined by existing Project Control. All Co-ordinates are in Irish Transverse Mercator Grid (ITM) as defined by OSI active GPS station Tallaght College (TLLG).

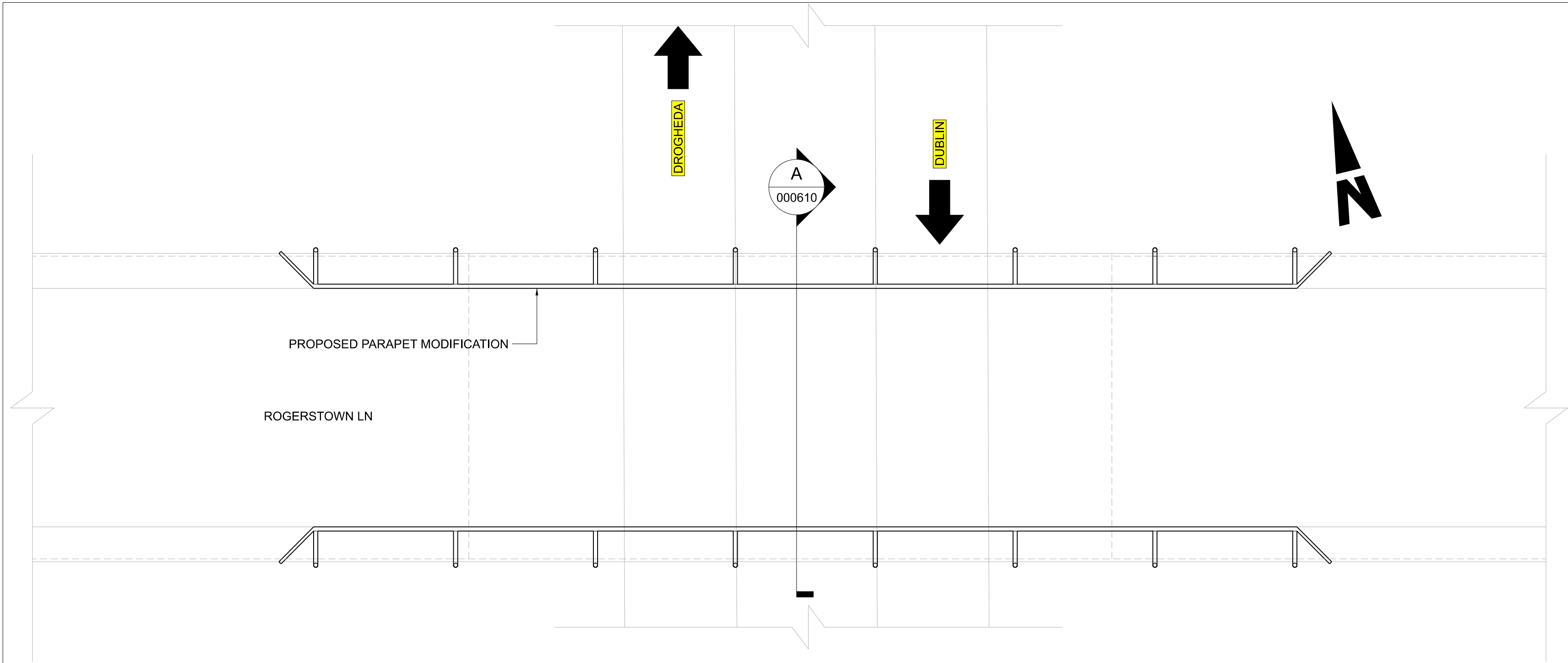


Rev	Date	Dwn	Chk'd	App'd	Description
P01	13/10/2023	AC	CG	DB	PLANNING ISSUE

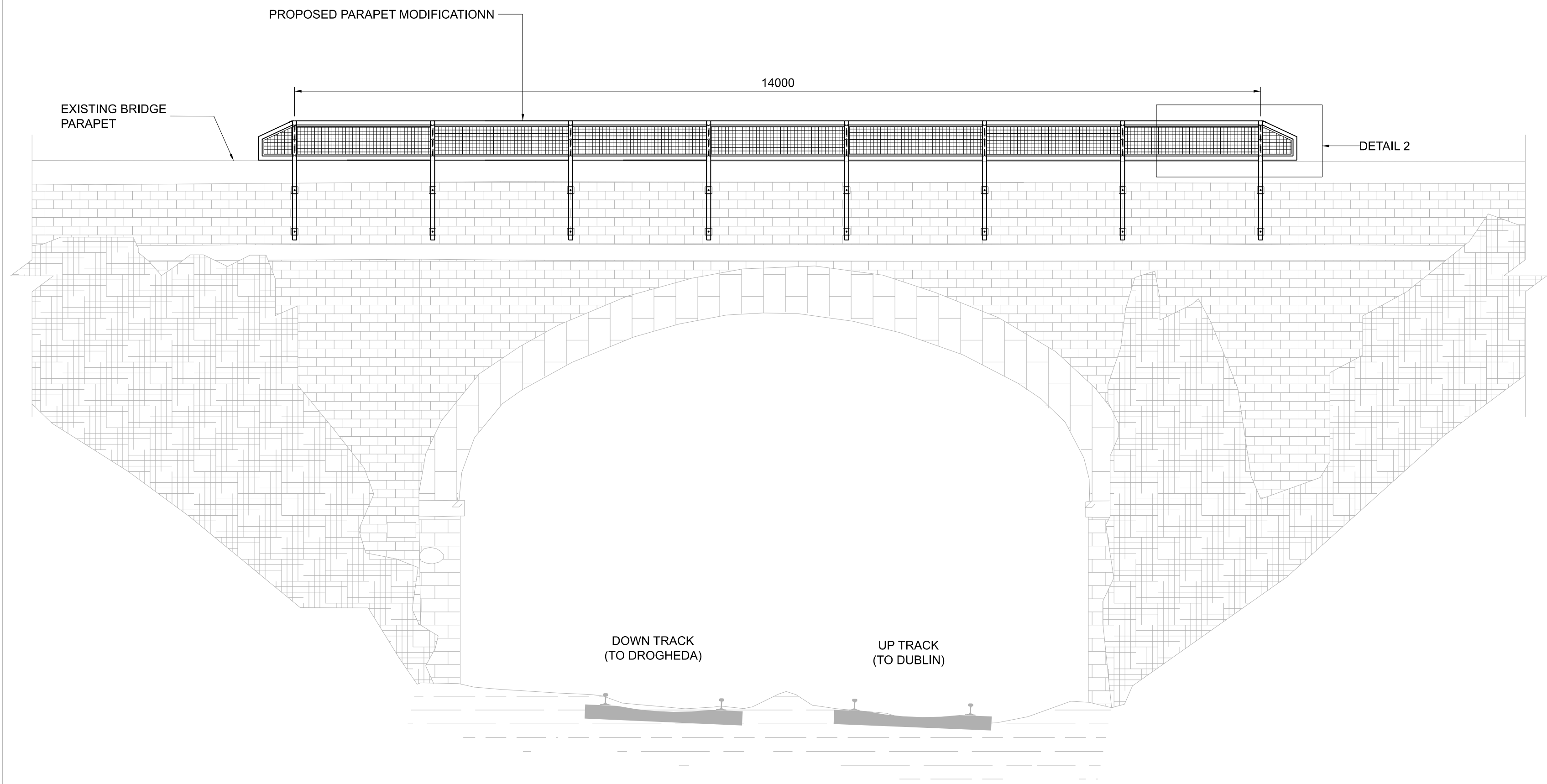
Client		Engineering Designer	
Date	01/06/23	Scale	1:1000 @ A1 @ A3
Project Code	D+WP56	Originator Code	ARP
QMS Code		Drawn	AC
		Checked	CG
		Approved	DB
		280275-00	

Project Title			
DART+ COASTAL NORTH			
Drawing Title			
OBB38 ROGERSTOWN LANE PARAPET MODIFICATIONS SITE LOCATION PLAN			
Drawing File Name	Sheet Number	Status	Rev
D+WP56-ARP-P4-NL-DR-RO-000609	01 of 01	S3	P01

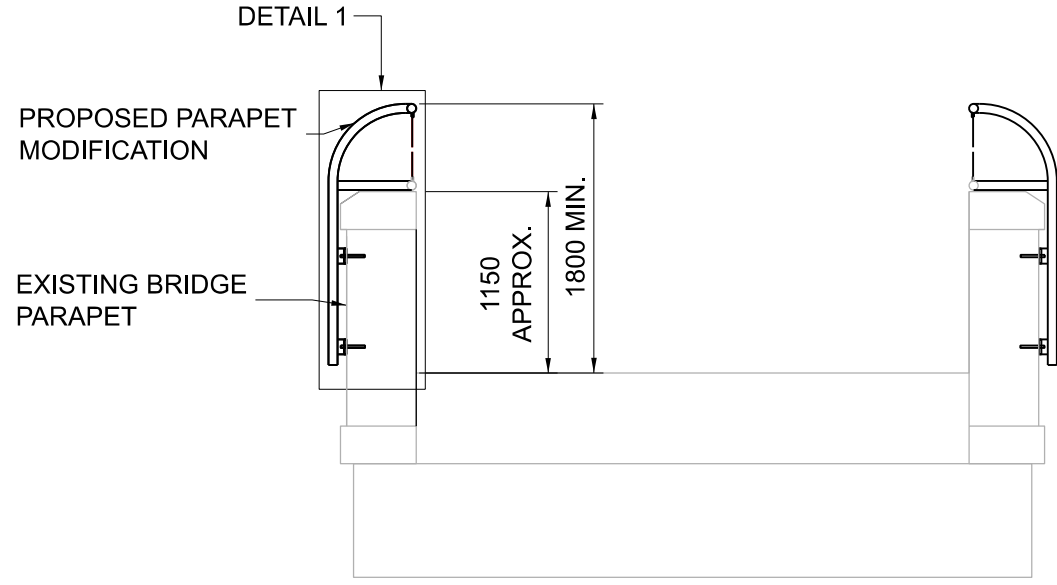
DO NOT SCALE USE FIGURED DIMENSIONS ONLY



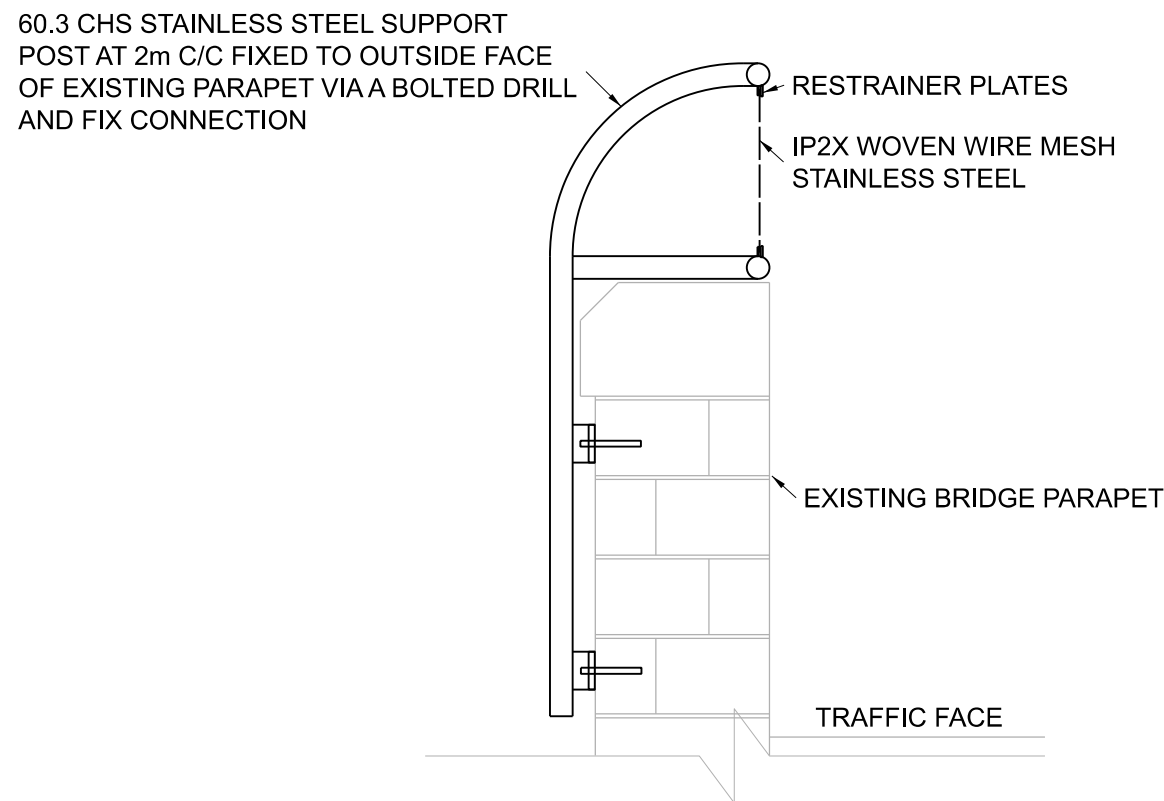
PLAN
000610 1:50



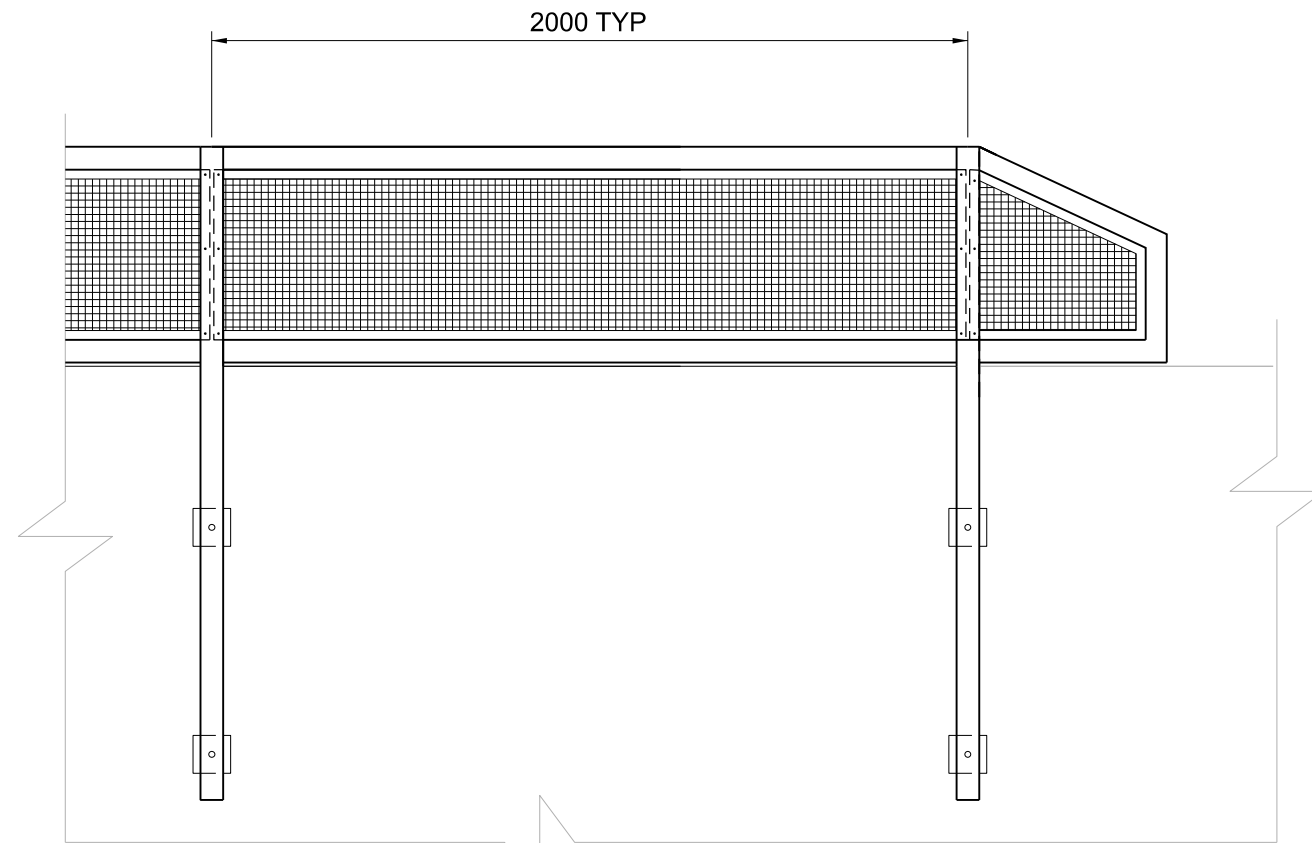
ELEVATION
000610 1:50



SECTION A
000610 1:50



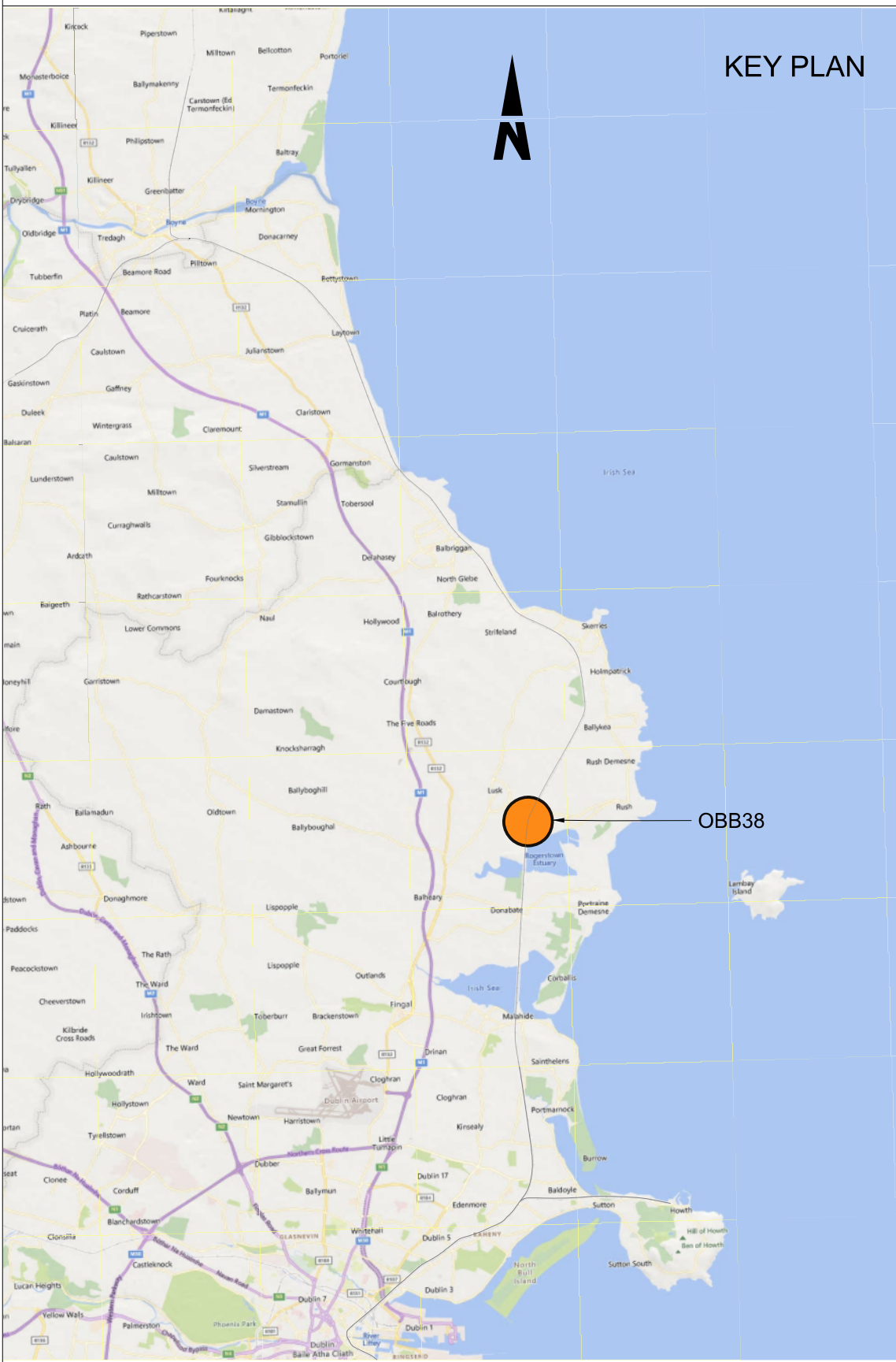
DETAIL 1
000610 1:20



DETAIL 2
000610 1:20

- NOTES
1. ALL DIMENSIONS ARE SHOWN IN MILLIMETERS UNLESS NOTED OTHERWISE.
 2. ALL LEVELS ARE SHOWN IN METERS ABOVE ORDINANCE DATUM.
 3. DO NOT SCALE FROM THIS DRAWING.
 4. STAINLESS STEEL SHALL BE GRADE EN 1.4401 (GRADE 316 EQUIVALENT).
 5. STAINLESS STEEL BOLT AND SCREW CONNECTIONS SHALL BE GRADE A4-70.

- LEGEND
- EXISTING ELEMENTS
 - PROPOSED ELEMENTS



Disclaimer

© Irish Rail (2023). This drawing is confidential and the copyright in it is owned by Irish Rail. This drawing must not be either loaned, copied or otherwise reproduced in whole or in part or used for any purpose without the prior permission of Irish Rail.

© OpenStreetMap contributors

© Ordnance Survey Ireland and Government of Ireland. All O.S. data used for plans are printed under Copyright Ordnance Survey Ireland 0039723 (OSI Aerial Data or OSI Lidar Data) & 2023/OSI_NMA_180 (OSI Vector Data). All elevations are in metres and relate to OSI Geoid Model (OSGM02) Mean Head as defined by existing Project Control. All Co-ordinates are in Irish Transverse Mercator Grid (ITM) as defined by OSI active GPS station Tallaght College (TLLG).



Rev	Date	Dm	Chk'd	App'd	Description
P01	13/10/2023	AA	CG	DB	PLANNING ISSUE

Client		Engineering Designer	
Date	01/06/2023	Scale	As Shown @ A1 @ A3
Project Code	D+WP56	Originator Code	ARP
Drawn	AA	Checked	CG
Approved	DB	QMS Code	280275-00

Project Title	DART+ COASTAL NORTH		
Drawing Title	OBB38 ROGERSTOWN LANE PARAPET MODIFICATIONS GENERAL ARRANGEMENT		
Drawing File Name	D+WP56-ARP-P4-NL-DR-RO-000610	Sheet Number	01 of 01
Status	S3	Rev	P01

DO NOT SCALE USE FIGURED DIMENSIONS ONLY